

CIRCUIT INSPECTION

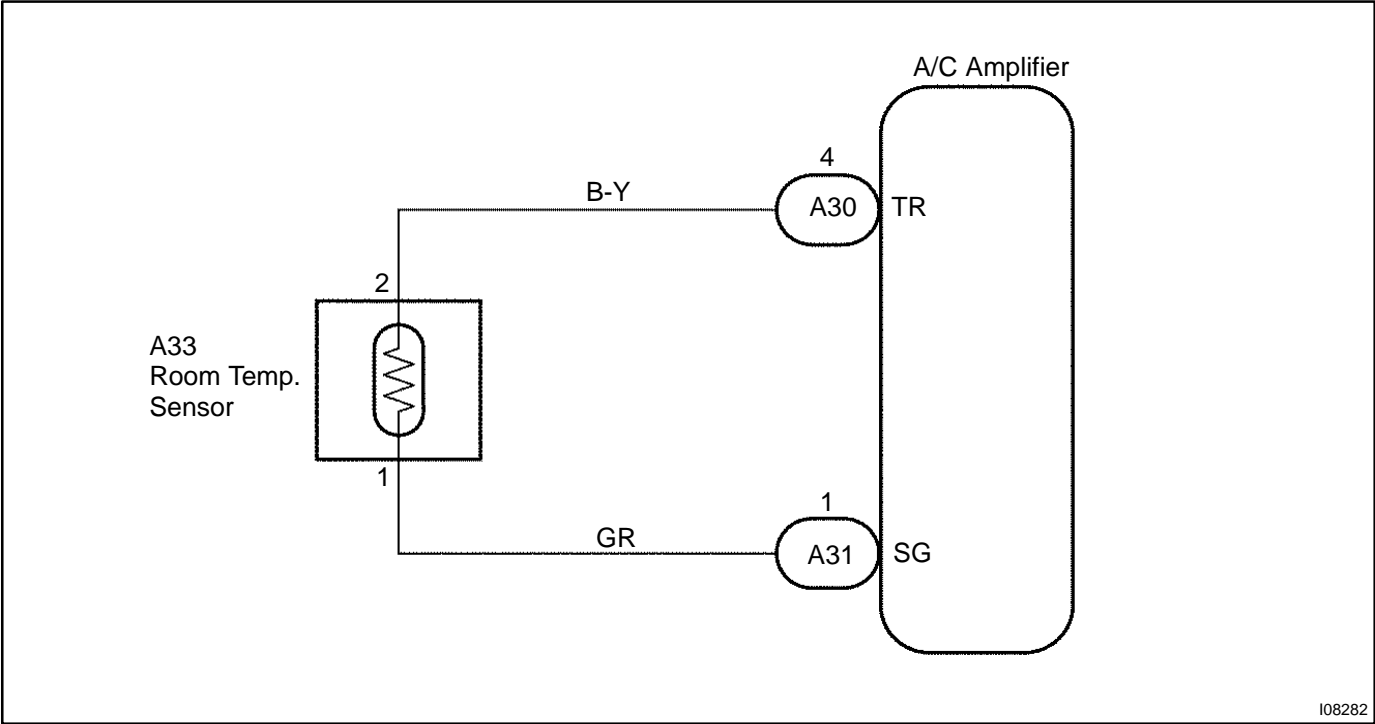
DTC	11	Room Temperature Sensor Circuit
-----	----	---------------------------------

CIRCUIT DESCRIPTION

This sensor detects the temperature inside the cabin and sends the appropriate signals to the A/C control assembly.

DTC No.	Detection Item	Trouble Area
11	Open or short in room temperature sensor circuit.	<ul style="list-style-type: none">• Room temperature sensor• Harness or connector between room temp. sensor and A/C control assembly• A/C control assembly

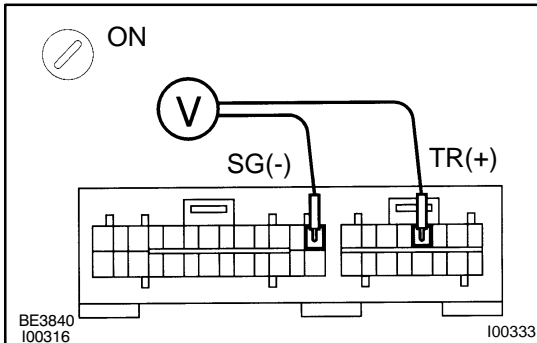
WIRING DIAGRAM



I08282

INSPECTION PROCEDURE

1	Check voltage between terminals TR and SG of A/C control assembly connector.
---	---

**PREPARATION:**

- (a) Remove A/C control assembly with connectors still connected (See page [AC-84](#)).
- (b) Turn ignition switch to ON.

CHECK:

Check voltage between terminals TR and SG of A/C control assembly connector at each temperature.

OK:

at 25 °C (77 °F) : 1.8 - 2.2 V

at 40 °C (104 °F) : 1.2 - 1.6 V

HINT:

As the temperature increases, the voltage decreases.

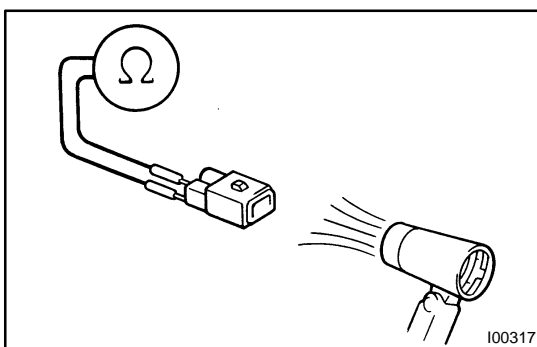
NG

Go to step 2.

OK

Proceed to next circuit inspection shown on problem symptoms table (See page [DI-586](#)). However, if DTC 11 is displayed, check and replace A/C control assembly.

2	Check room temperature sensor.
---	---------------------------------------

**PREPARATION:**

- (a) Remove room temperature sensor from lower No. 1 panel (See page [AC-74](#)).
- (b) Disconnect room temperature sensor connector.

CHECK:

Check resistance between terminals 1 and 2 of room temperature sensor connector at each temperature.

OK:

at 25 °C (77 °F) : 1.6 - 1.8 kΩ

at 40 °C (104 °F) : 0.5 - 1.7 kΩ

HINT:

As the temperature increases, the resistance decreases.

NG

Replace room temperature sensor.

OK

3	Check harness and connector between A/C control assembly and room temperature sensor (See page IN-28).
---	---

NG

Repair or replace harness or connector.

OK

Check and replace A/C control assembly.